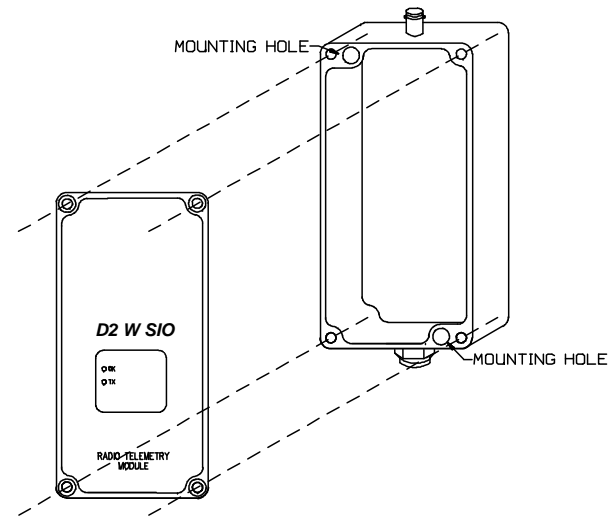


# D2 W SIO Installation Guide

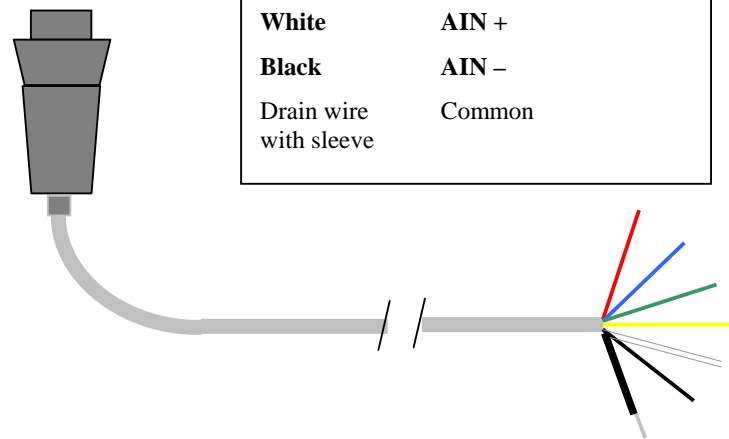
**WARNING !**  
**EXPLOSION HAZARD**  
DO NOT DISCONNECT WHILE CIRCUIT IS LIVE UNLESS AREA IS KNOWN TO BE NON HAZARDOUS

## How to Mount the D2 W SIO

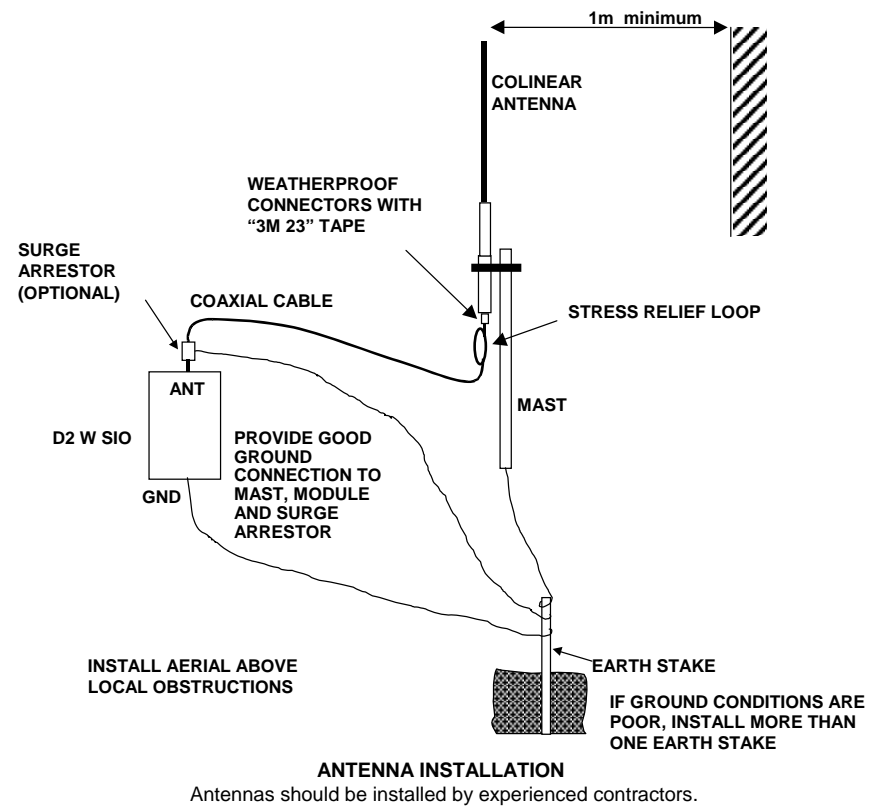


## Connection Lead

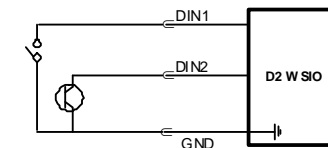
Red	Supply voltage +
Blue	DIN1
Green	DIN2
Yellow	Analog loop supply
White	AIN +
Black	AIN -
Drain wire with sleeve	Common



## Typical Antenna Installation

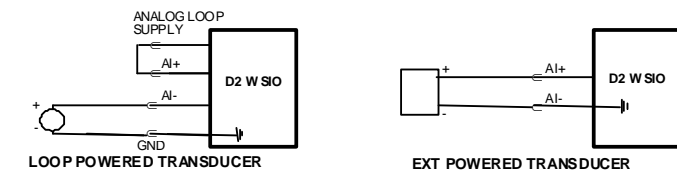


## Digital/Pulse Input Connections

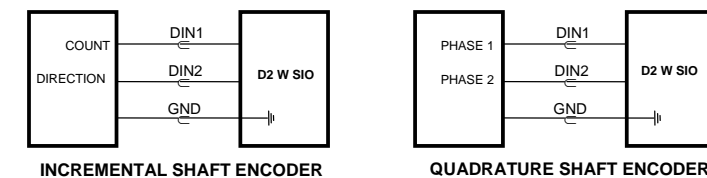


Inputs can be voltage free contact or open -collector transistor

## Analog Input Connections



## Shaft Encoder Connections



### FCC Notice

This device complies with part 15.247 of the FCC Rules Operation is subject to the two following conditions

- 1) This device may not cause harmful interference
- 2) This device must accept any interference received, including interference that may cause undesired operation

### Caution !!

To comply with CSA Class1, Division 2 requirements, unit must be mounted in an approved enclosure

## External Power Supply Installation

