

COOPER CROUSE-HINDS® LUXICON

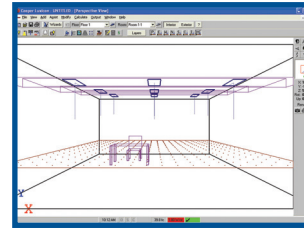
SYSTEM REQUIREMENTS

- Windows® 95/98, Windows 2000, Windows Millennium Edition (ME), Windows NT, or Windows XP
- CD-ROM Drive
- Pentium 200 Processor
- 64MB RAM
- SVGA Graphics Capability and Color Monitor
- 4MB Video Memory
- Windows-Supported Printer or Plotter
- 65MB Free Hard Disk Space for CD

COOPER Crouse-Hinds

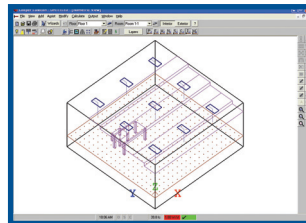
Luxicon

Luxicon makes it incredibly easy to obtain lighting calculations resulting in professional quality designs. From exterior/interior layouts to economic performance data, you can access and evaluate information needed to design and specify the most efficient and effective lighting system possible. And, this popular and versatile software uses a Windows®-based interface with tutorials, built-in Wizards and online help files to make it very easy to use.



LUXICON IS EASY TO USE ...

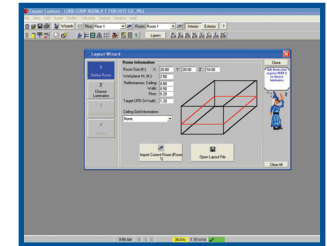
- Windows-based with Online Tutorials, Help Guides and Wizards to assist you with your design.
- Includes Cooper Crouse-Hinds® and Cooper Lighting® photometric database, electronic specification sheets and user-defined luminaire database.
- Contains a library of more than 40,000 IES Photometric reports, plus the ability to import any manufacturer's fully formatted IES files.
- Seamless integration with AutoCAD® for easy import, export and rotation of DXF (exchange format for CAD files. A format for storing vector data in ASCII or binary files) and DWG files (proprietary format used by Autodesk CAD System), and you can work in up to 7 unique CAD views.



COOPER Crouse-Hinds

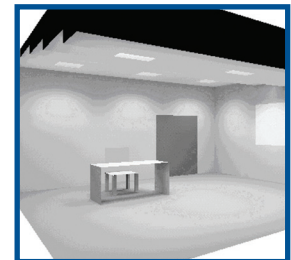
LUXICON GIVES QUICK, ACCURATE CALCULATIONS...

- Use Quick-Calc selecting from a library of predefined objects and architectural items or full calculation methods.
- Calculate horizontal, vertical or surface illuminance for indoor and outdoor projects.
- Perform economic analysis for simple payback and life cost information.
- Automatically calculate how many luminaires are needed – continual monitoring of average foot-candles and unit power density (watts/sq. ft.).
- Account for daylight effects and varying ambient temperatures.



LUXICON GENERATES PROFESSIONAL OUTPUT...

- Present output graphically or in text format
- Display point-by-point calculation grids or iso-illuminance contour values.
- Generate complete luminaire schedules and photo-realistic gray-scale renderings of your designs.
- Organize a presentation packet.



Virtual Room View